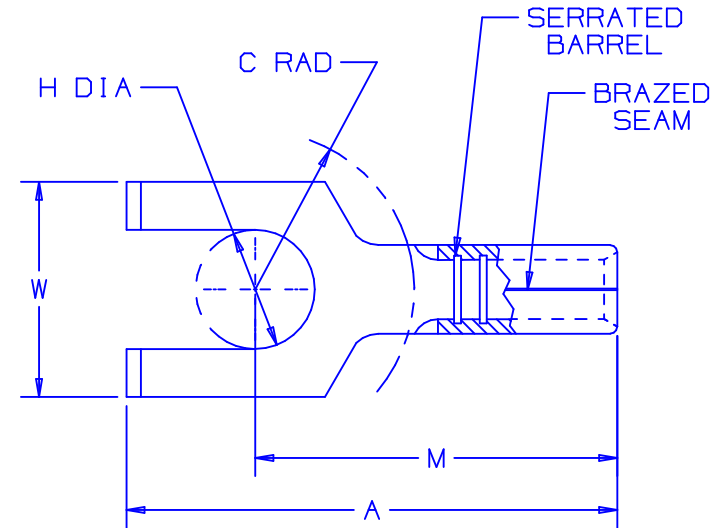
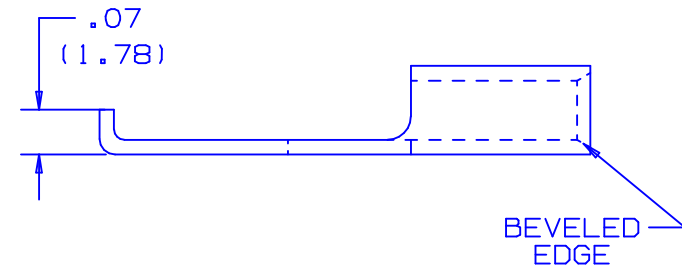


PANDUIT PART NUMBER	STUD SIZE	DIMENSIONS in.				
		A $\pm .020$	W $\pm .010$	C $\pm .015$	M $\pm .020$	H $\pm .005$
P14-6FF	#6	.65 (16.51)	.28 (7.11)	.22 (5.59)	.49 (12.45)	.160 (4.06)
P14-8FF	#8	.72 (18.29)	.31 (7.87)	.25 (6.35)	.53 (13.46)	.173 (4.39)



NOTES:

- UL LISTED AND CSA CERTIFIED FOR:
 - #16-14 AWG SOLID OR STRANDED COPPER WIRE
 - 347° F (175° C) MAX. TEMP. RATING
- MATERIAL:
 - STAMPING - .03" (.76) THK COPPER, TIN PLATED
- PACKAGE QTY: STD. PKG. 100
BULK PKG. 1000
- DIMENSIONS IN BRACKETS ARE IN MILLIMETERS
- INSTALLATION TOOLS: CT-100, CT-160, CT-200



LISTED
587H
E52164



CERTIFIED
LR31212

A41237_05

05	11/01	SAB		THE TOLERANCE FOR DIMENSION H WAS $\pm .01$				<p>TINLEY PARK, ILLINOIS</p> <p>#16-14 BARREL NON-INSULATED FLANGED FORK</p>
04	10/01	SAB	SKB	DIMENSION H FOR P14-6FF WAS .15, (3.81)	09712	BAD	LA	
03	1/01	RM	SKB	FILESPEC WAS A41237A::1:L1	08937	CCH	JAC	
2	7-88	DW		REDRAWN WITH REVISIONS				
REV	DATE	BY	CHK	DESCRIPTION	ECN #	PM	APP	DRAWN BY DAW
								CHK'D
								SCALE NONE
								DRAWING NO. A41237